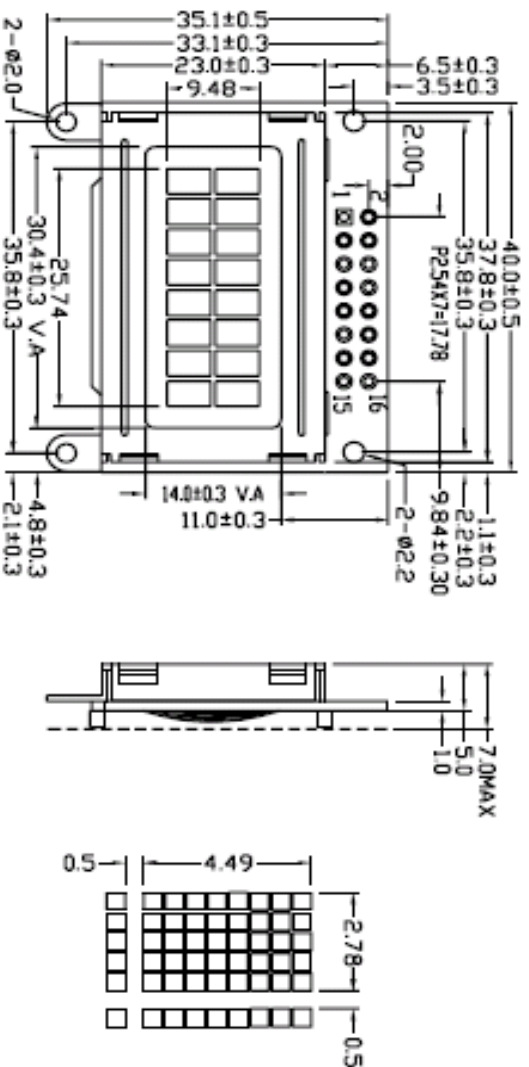


LCD-DISPLAY YM-0802A Series

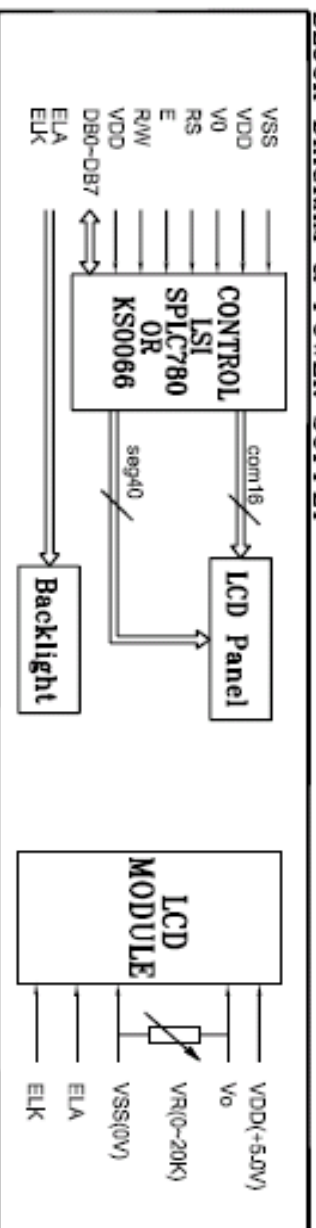
8X2 CHARACTERS
1/16 DUTY, 1/5 BIAS

OUTLINE DIMENSIONS



WHIT EL.B/L
WITHOUT B/L

BLOCK DIAGRAM & POWER SUPPLY



MECHANICAL SPECIFICATION & FEATURE

Item	Normal Dimension(mm)	FEATURE
Module Size(W*H*T)	40.0X35.1X7.0	STN , TN , HTN , FSTN
View Area(W*H)	30.4X14.0	STN:Yellow-Green , Grey , Others:Grey
Character Pitch(W*H)	3.28X4.99	6 O'Clock , 12 O'Clock
Character size(W*H)	2.78X4.49	Positive Type , Negative Type
Character Font	5X8	Transmissive , Reflective , Transflective
Dot Pitch(W*H)	0.57X0.57	-10°C-60°C , -20°C-70°C
Dot Size(W*H)	0.5X0.51	EL:Green , Blue-Green , blue , white , without

ELECTRICAL CHARACTERISTICS

Item	Symbol	Symbol	Min.	Typ.	Max.	Unit
Operating Voltage	V _{od}	T=25°C	---	5.0	---	V
Operating Voltage LCD	V _{ld}	T=25°C	---	4.7	---	V
Supply Current	I _{dd}	T _a =25°C , V _{od} =6.0V	---	2.0	3.0	mA
Supply Current for Backlight	I _f	---	---	---	---	mA

INTERFACE PIN CONNECTIONS

Pin No.	Symbol	Level	Description
1	VSS	---	Ground for Logic
2	VDD	---	Power supply for Logic(+5.0V)
3	V0	---	Power supply for LCD drive
4	RS	H/L	Register selection (H:DATA register , L:Instruction register)
5	R/W	H/L	Read/Write selection (H:Read , L:Write)
6	E	H/L	Enable signal for LCM
7-14	DB0-DB7	H/L	Data Bus Lines
15	ELA	---	Backlight
16	ELK	---	Backlight

REMARK

Operating voltage option : 5.0V or 3.0V
CGROM font option : English/ Japanese / Russian etc